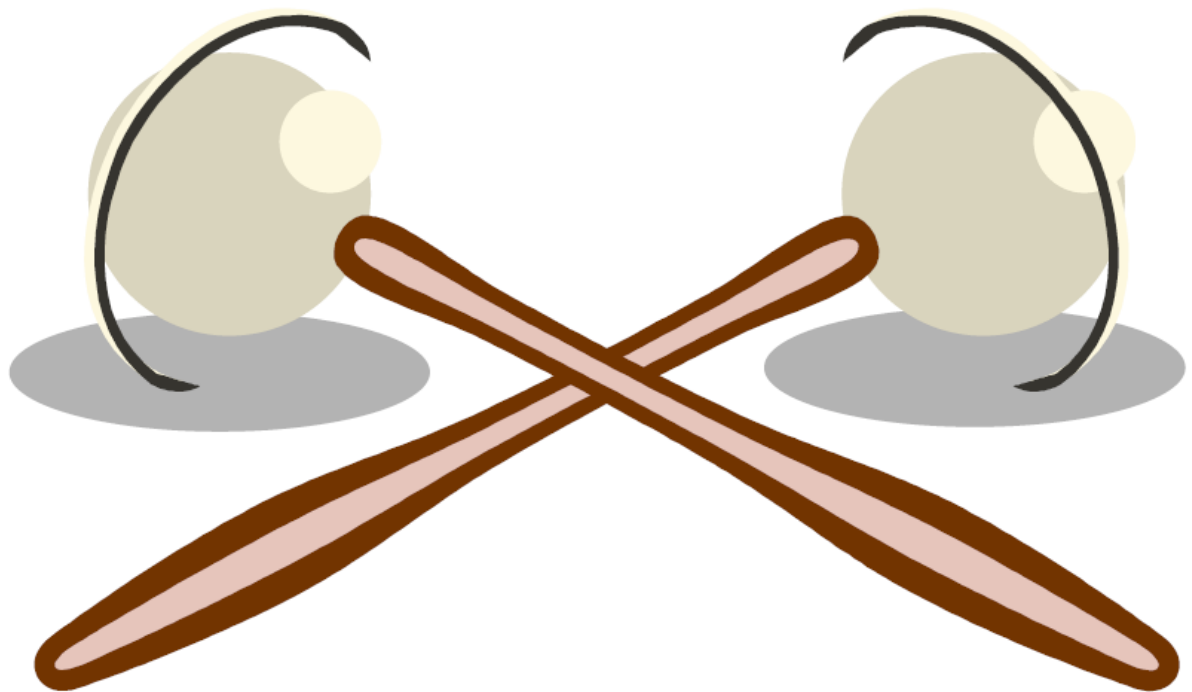


Rhythmen von A-Z

von Christoph Nießen



www.stickcontrol.de Schlagzeugnoten umsonst.....!

An dieser Stelle findest du Rhythmen für das Drum-Set in unterschiedlichen Schwierigkeitsgraden und Stilrichtungen.

Die Rhythmen sind prinzipiell nach ihrem Schwierigkeitsgrad sortiert, die Variationen (-A1- A2- etc.) allerdings steigen in ihrem Anspruch sehr schnell an und sind nicht unbedingt für den/die Anfänger/in geeignet

Die zur Zeit hier vorhandenen Rhythmen sind ein kleiner Anfang und werden in den nächsten Tagen ständig ergänzt und bearbeitet.

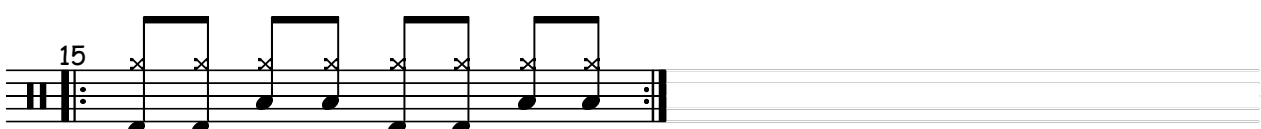
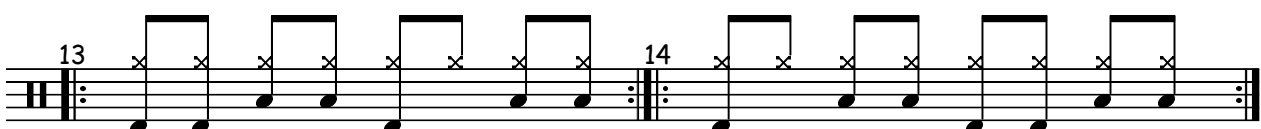
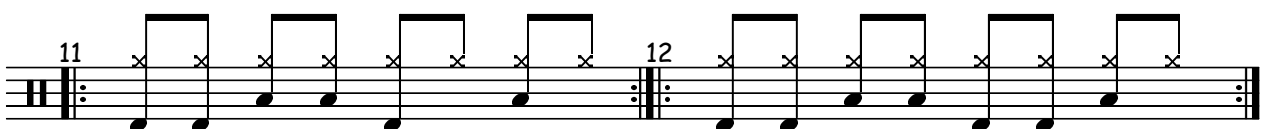
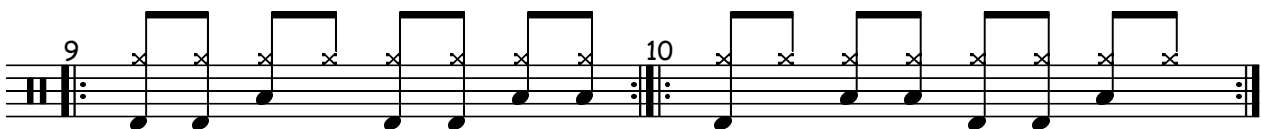
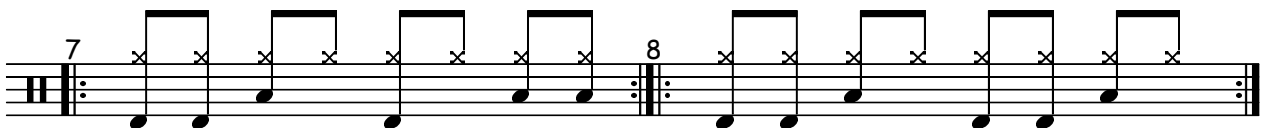
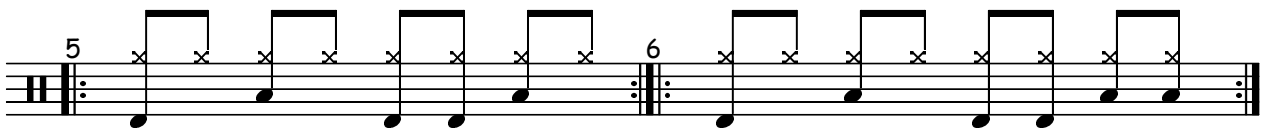
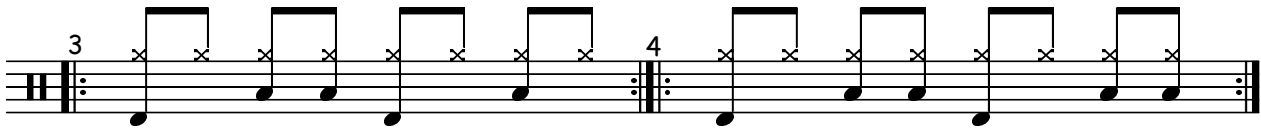
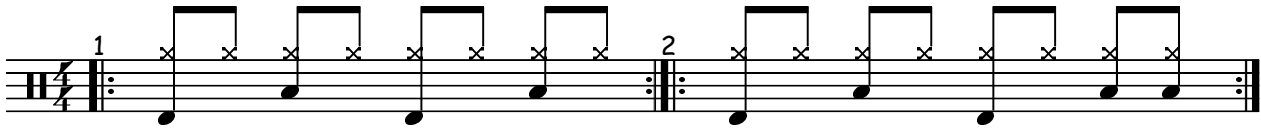


Viel Spaß, sei kreativ,
und keep on groovin´

Christoph Nießen

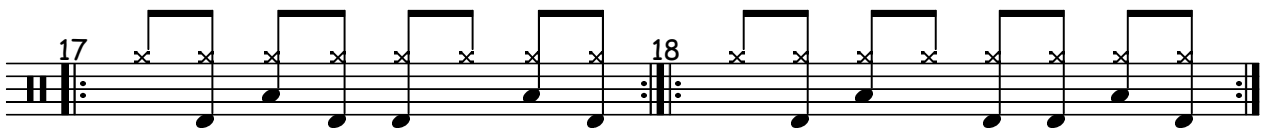
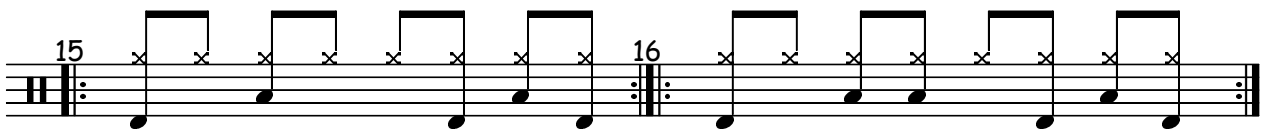
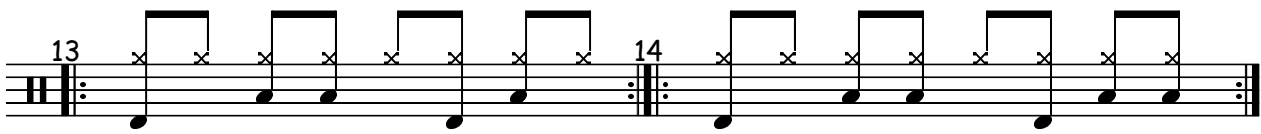
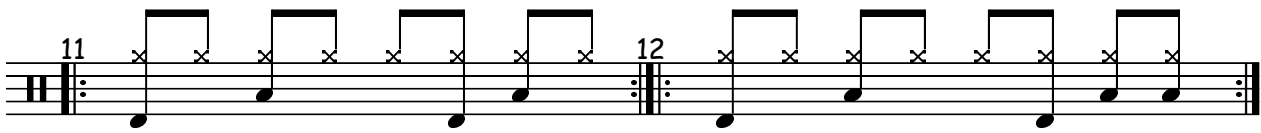
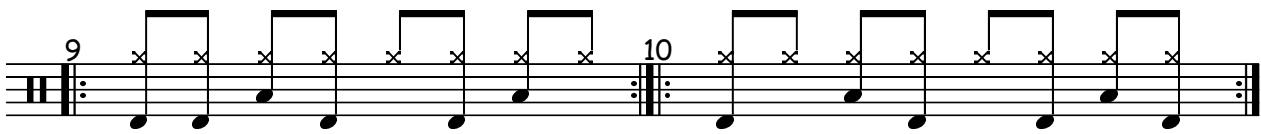
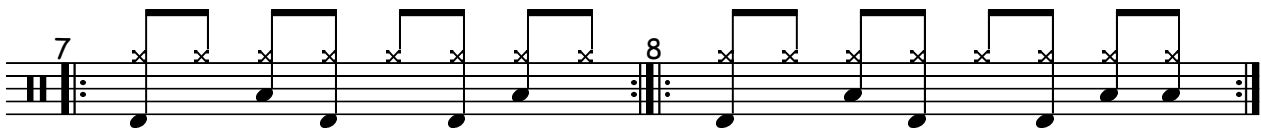
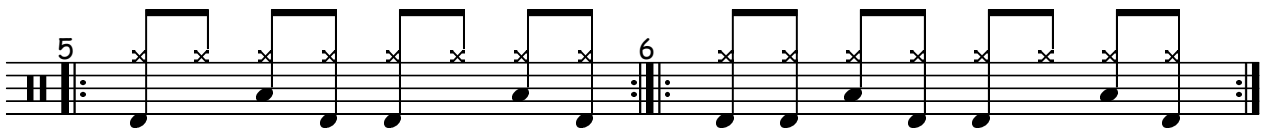
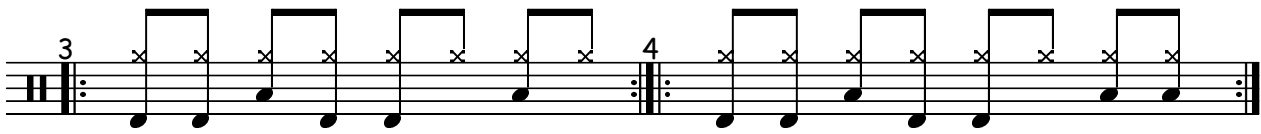
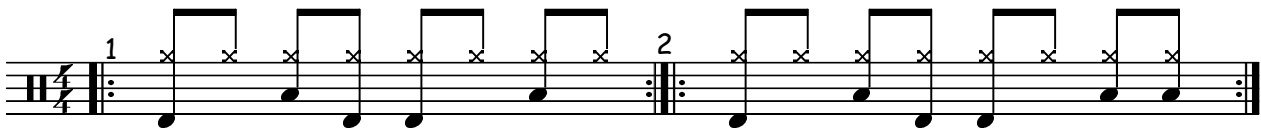
Rhythmen -A-

Christoph Nießen



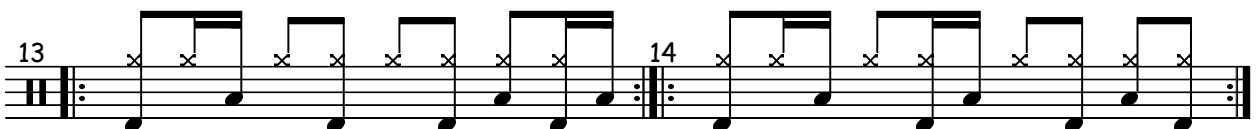
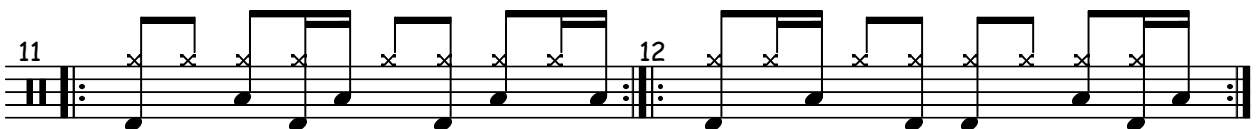
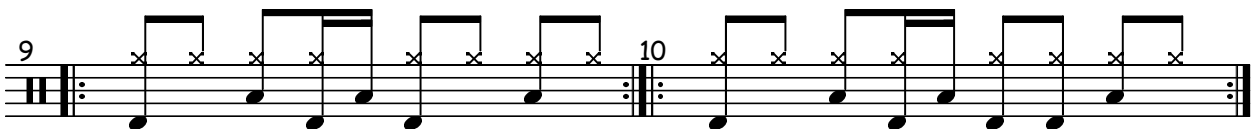
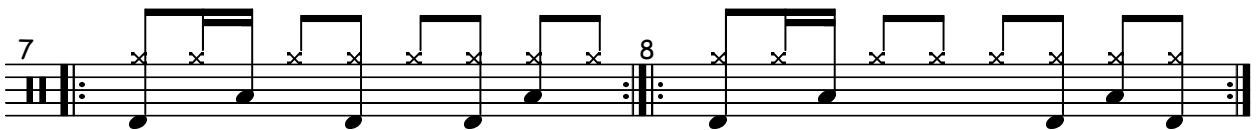
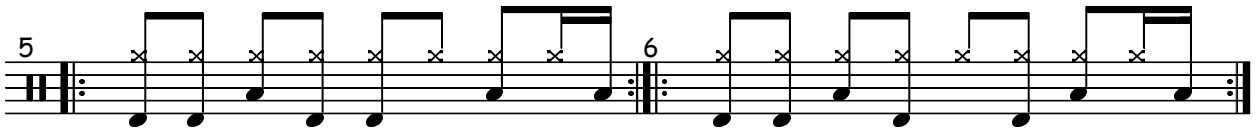
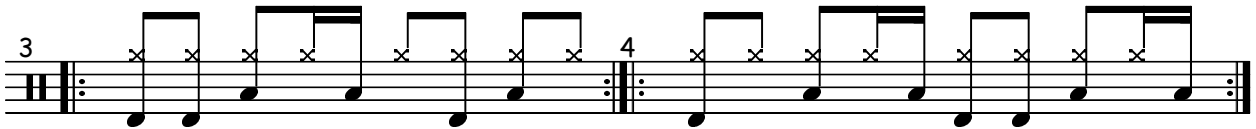
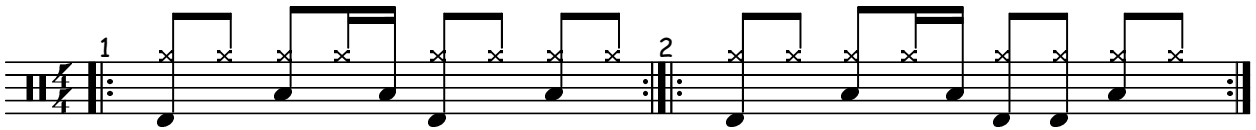
Rhythmen -B-

Christoph Nießen



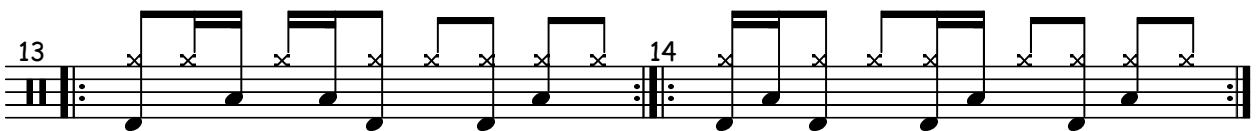
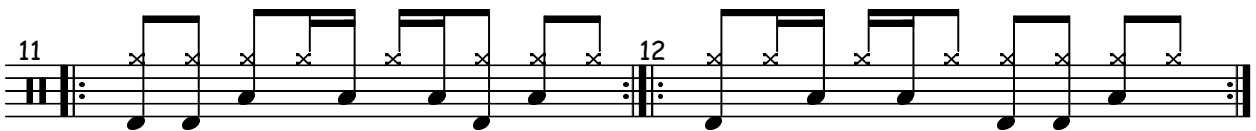
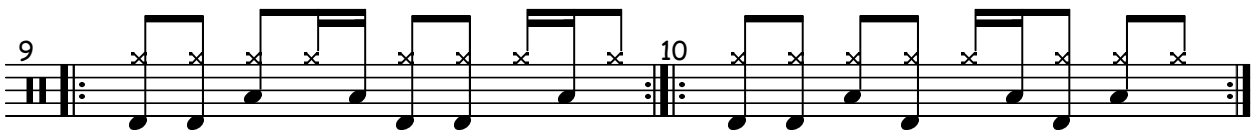
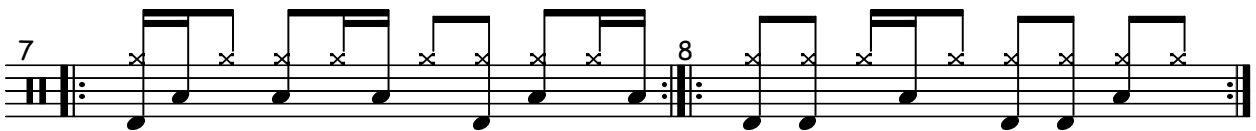
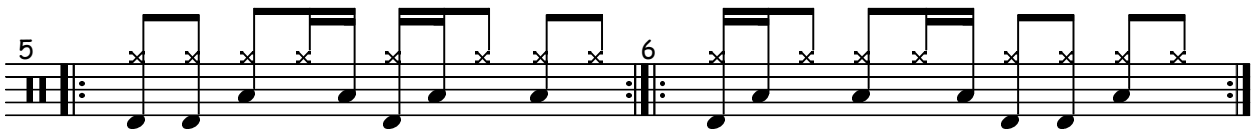
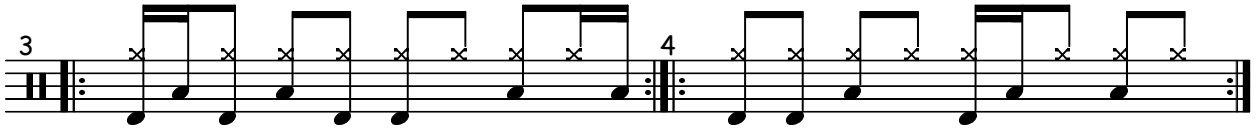
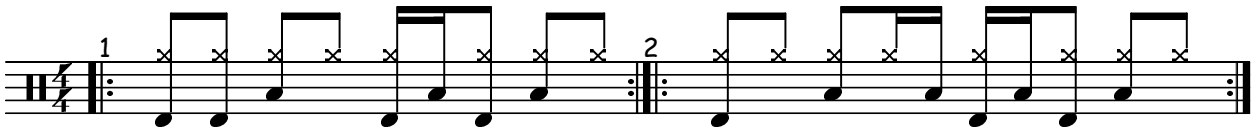
Rhythmen -C-

Christoph Nießen



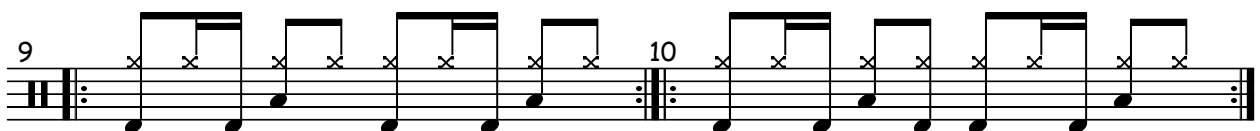
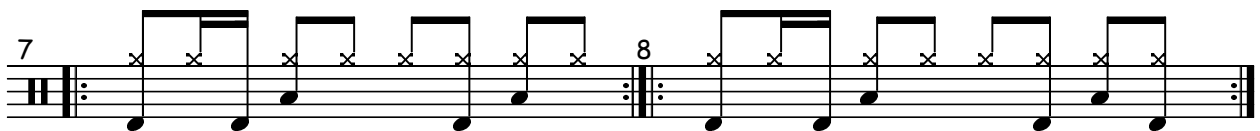
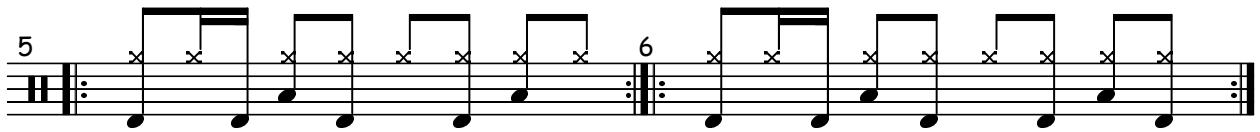
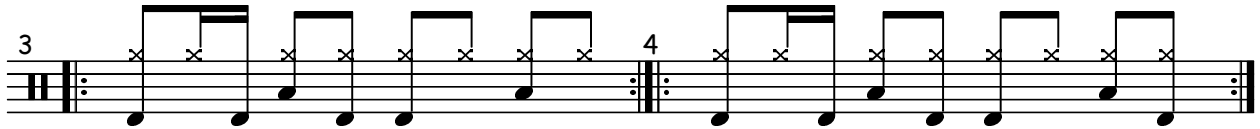
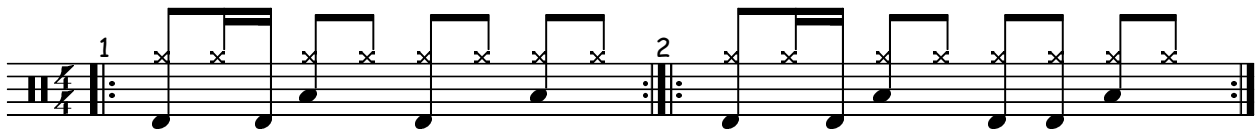
Rhythmen -D-

Christoph Nießen



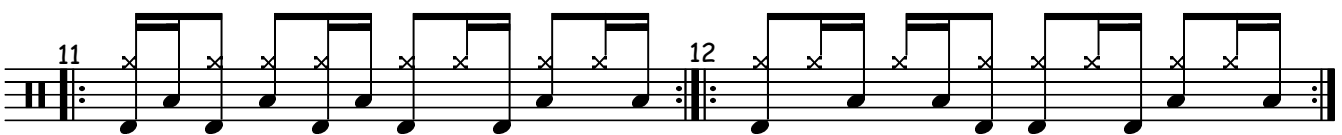
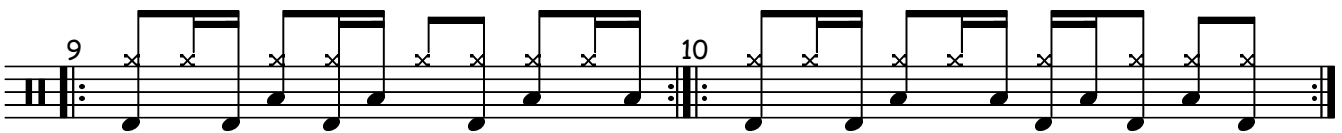
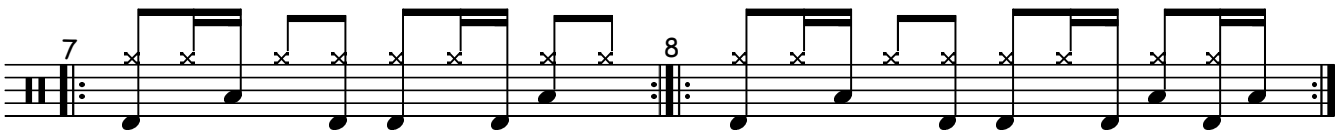
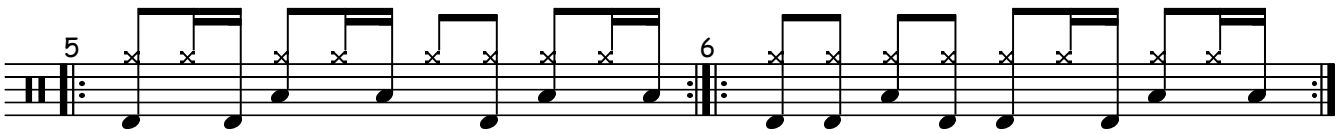
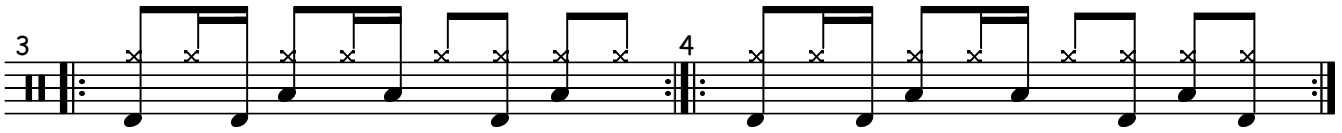
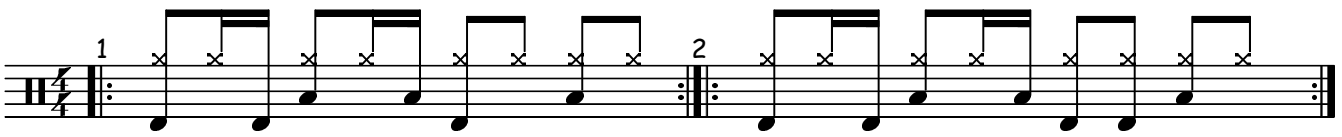
Rhythmen -E-

Christoph Nießen



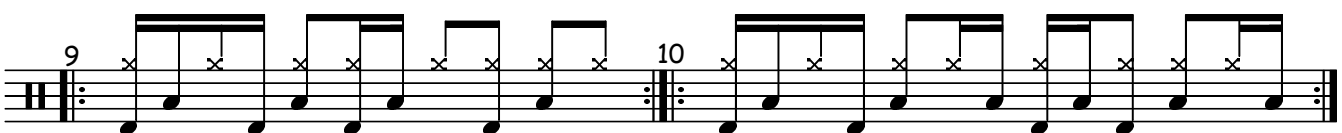
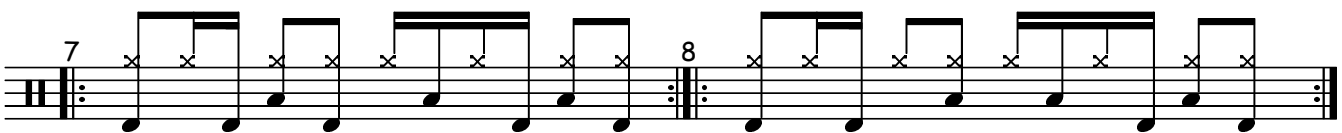
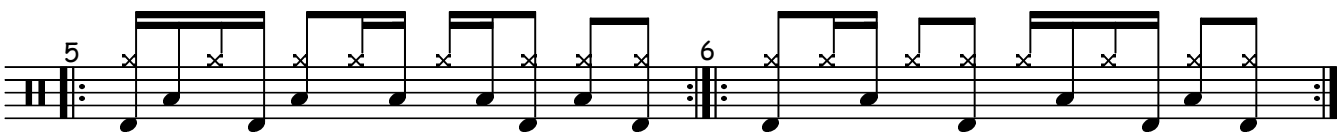
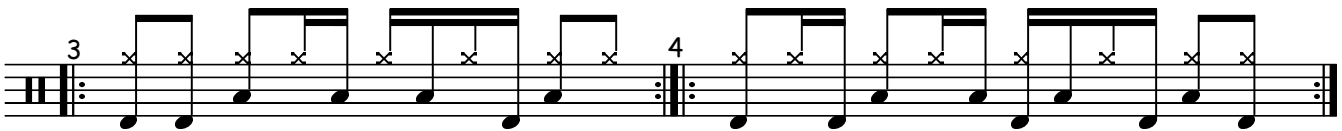
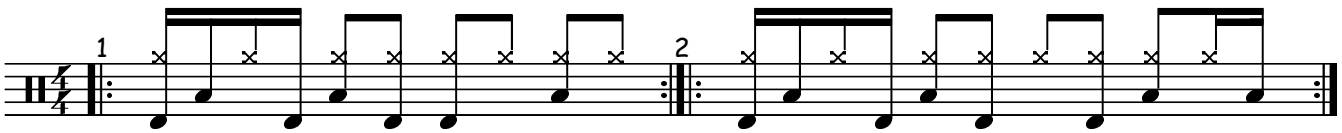
Rhythmen -F-

Christoph Nießen



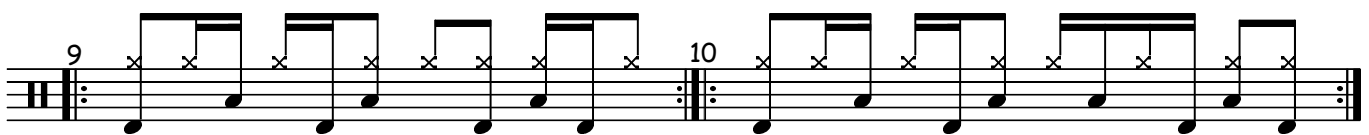
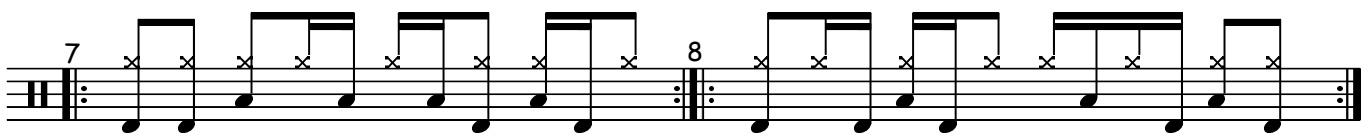
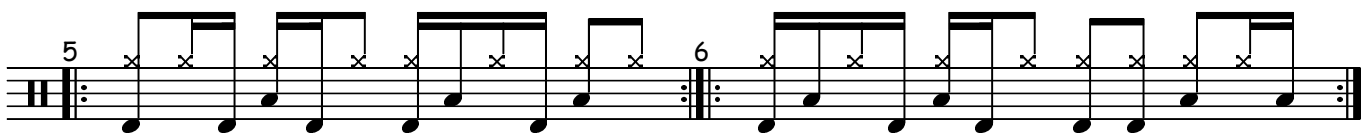
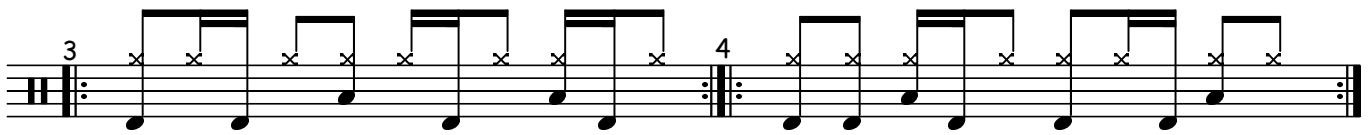
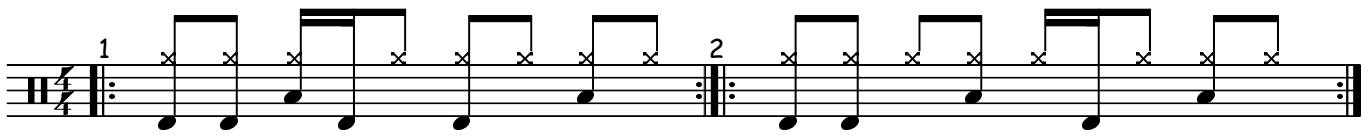
Rhythmen -G-

Christoph Nießen



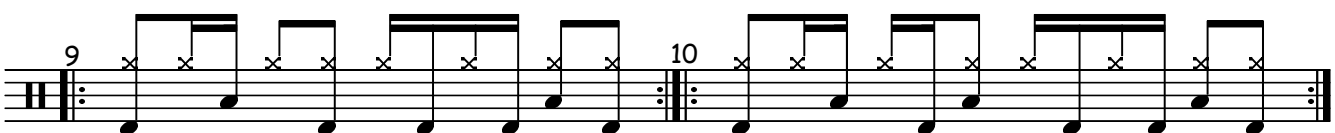
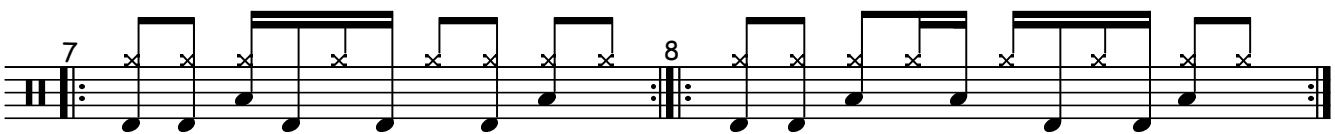
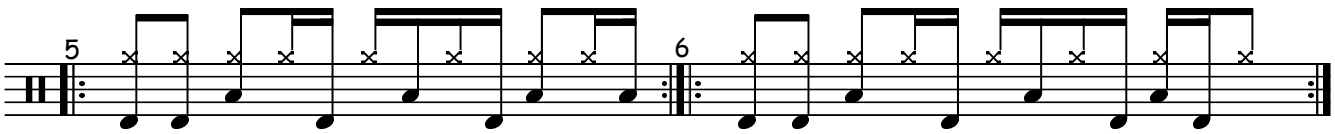
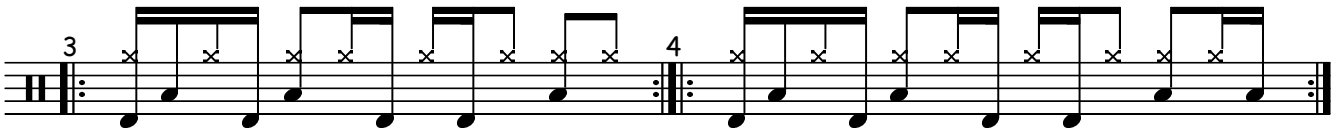
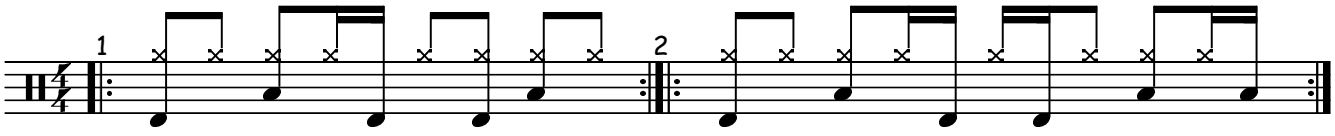
Rhythmen -H-

Christoph Nießen



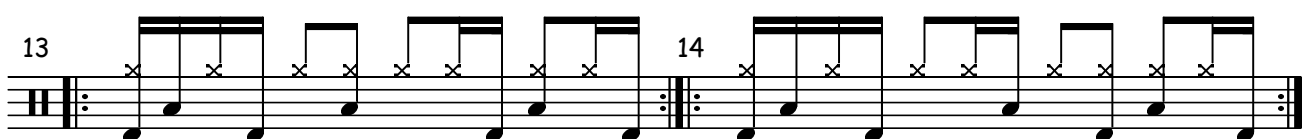
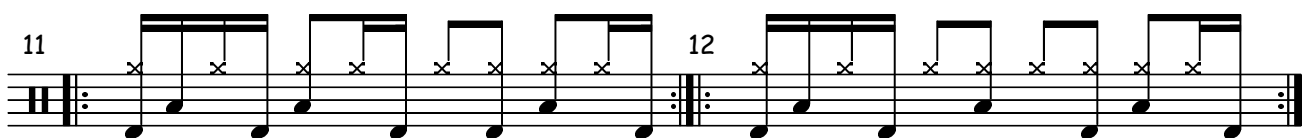
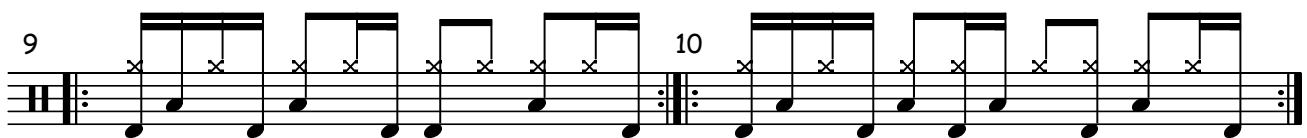
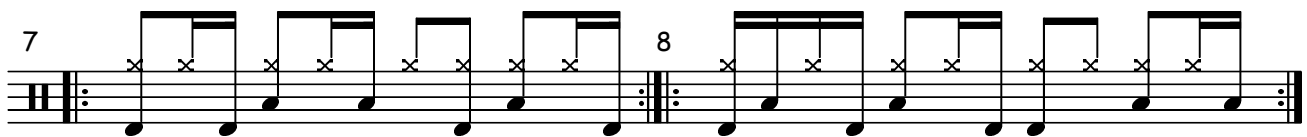
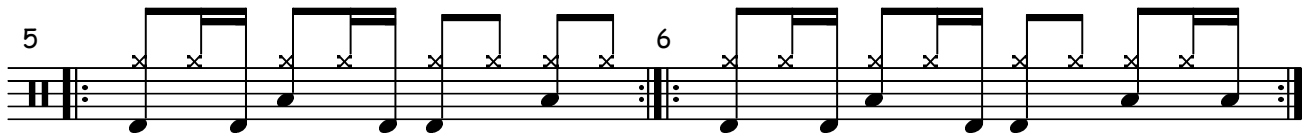
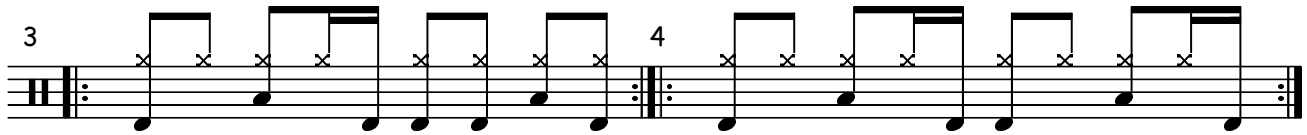
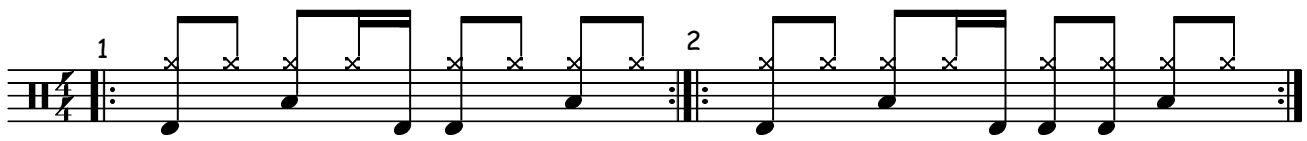
Rhythmen -I-

Christoph Nießen



Rhythmen-J-

Christoph Nießen



Ab hier findest du die schon vorne angekündigten Variationen der bisher vorgestellten Grundrhythmen. Diese Varianten beziehen sich in der Hauptsache auf die Becken bzw. HiHat-Arbeit, auch die Ghost-Strikes spielen eine nicht unwichtige Rolle.

Die zur Zeit hier vorhandenen Rhythmen sind ein kleiner Anfang und werden in den nächsten Tagen ständig ergänzt und bearbeitet.



Viel Spaß, sei kreativ,
und keep on groovin´

Christoph Nießen

Rhythmen - A-B-1-

Christoph Nießen

The image displays a musical score for a rhythmic exercise titled "Rhythmen - A-B-1-". The score is organized into 18 numbered staves, each containing a sequence of rhythmic patterns. The first staff (1) is in 4/4 time, while the remaining staves (2-18) are in 3/4 time. Each staff begins with a double bar line and repeat dots. The rhythmic patterns consist of eighth and sixteenth notes, often grouped together. Accents (^) are placed above certain notes to indicate emphasis. The patterns are repeated across the staves, with some variations in the grouping and placement of notes. The overall structure is a series of 18 measures, each containing a specific rhythmic exercise.

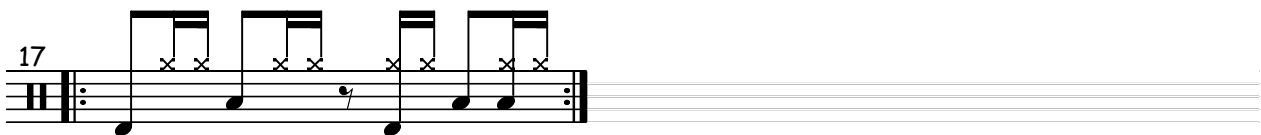
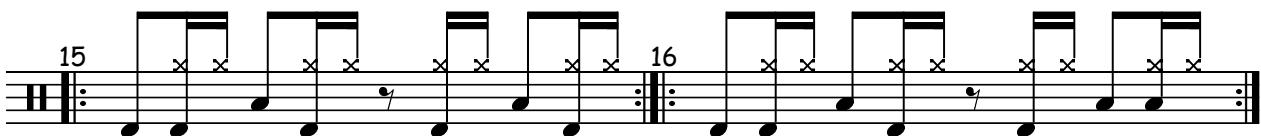
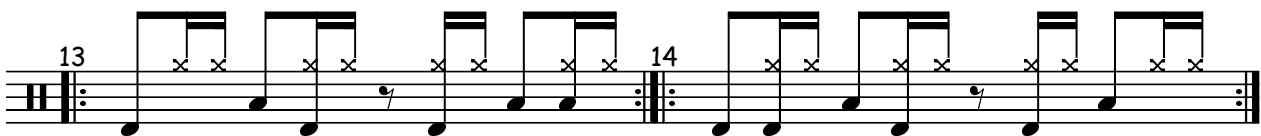
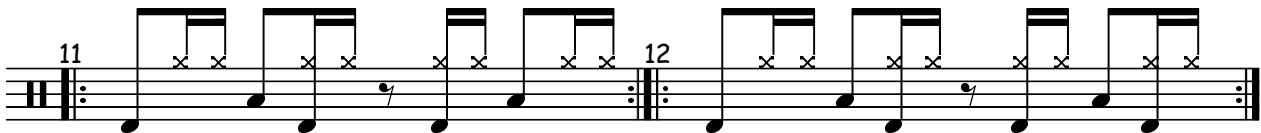
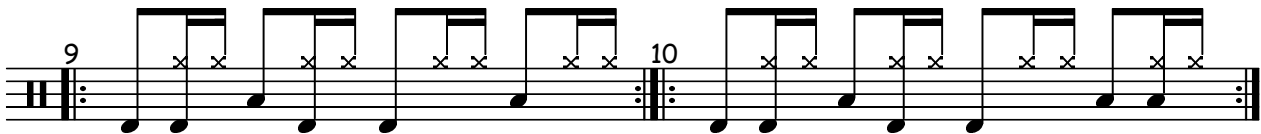
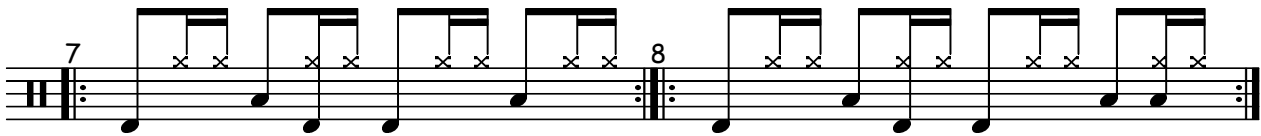
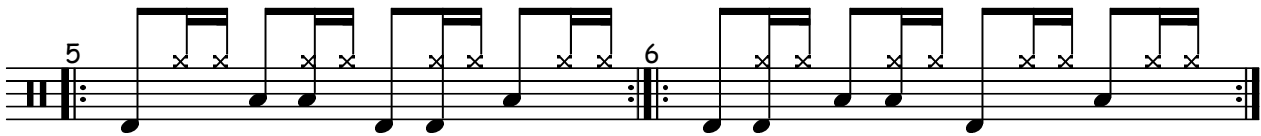
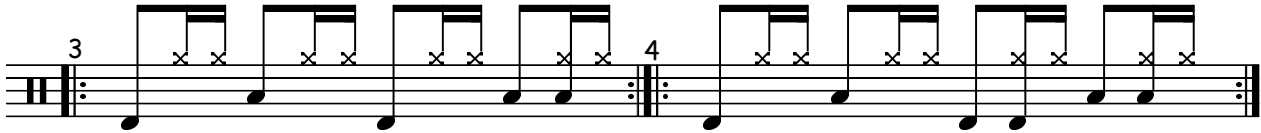
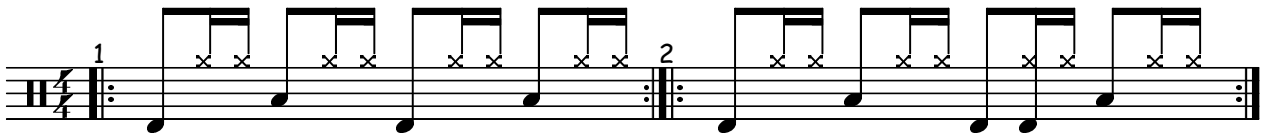
Rhythmen - A-B-2-

Christoph Nießen

The image displays 20 numbered rhythmic exercises on a single staff in 4/4 time. Each exercise is a two-measure phrase. Exercises 1 through 12 consist of quarter notes with stems pointing up, followed by quarter notes with stems pointing down. Exercises 13 through 20 introduce eighth notes with stems pointing up, followed by quarter notes with stems pointing down. Exercises 13, 15, 17, and 19 include a quarter rest in the second measure. Each exercise begins with a repeat sign and ends with a double bar line and repeat dots.

Rhythmen - A-B-3-

Christoph Nießen



Rhythmen - A-B-4-

Christoph Nießen

1

Musical notation for exercise 1: A 4/4 staff with a treble clef. It contains two measures. The first measure has a quarter note on C4, followed by a dotted quarter note on C4 with an accent (^), and a quarter note on C4. The second measure has a quarter note on C4, followed by a dotted quarter note on C4 with an accent (^), and a quarter note on C4. The exercise is marked with a double bar line and repeat dots.

3

Musical notation for exercise 3: A 4/4 staff with a treble clef. It contains two measures. The first measure has a quarter note on C4, followed by a dotted quarter note on C4 with an accent (^), and a quarter note on C4. The second measure has a quarter note on C4, followed by a dotted quarter note on C4 with an accent (^), and a quarter note on C4. The exercise is marked with a double bar line and repeat dots.

5

Musical notation for exercise 5: A 4/4 staff with a treble clef. It contains two measures. The first measure has a quarter note on C4, followed by a dotted quarter note on C4 with an accent (^), and a quarter note on C4. The second measure has a quarter note on C4, followed by a dotted quarter note on C4 with an accent (^), and a quarter note on C4. The exercise is marked with a double bar line and repeat dots.

7

Musical notation for exercise 7: A 4/4 staff with a treble clef. It contains two measures. The first measure has a quarter note on C4, followed by a dotted quarter note on C4 with an accent (^), and a quarter note on C4. The second measure has a quarter note on C4, followed by a dotted quarter note on C4 with an accent (^), and a quarter note on C4. The exercise is marked with a double bar line and repeat dots.

9

Musical notation for exercise 9: A 4/4 staff with a treble clef. It contains two measures. The first measure has a quarter note on C4, followed by a dotted quarter note on C4 with an accent (^), and a quarter note on C4. The second measure has a quarter note on C4, followed by a dotted quarter note on C4 with an accent (^), and a quarter note on C4. The exercise is marked with a double bar line and repeat dots.

11

Musical notation for exercise 11: A 4/4 staff with a treble clef. It contains two measures. The first measure has a quarter note on C4, followed by a dotted quarter note on C4 with an accent (^), and a quarter note on C4. The second measure has a quarter note on C4, followed by a dotted quarter note on C4 with an accent (^), and a quarter note on C4. The exercise is marked with a double bar line and repeat dots.

13

Musical notation for exercise 13: A 4/4 staff with a treble clef. It contains two measures. The first measure has a quarter note on C4, followed by a dotted quarter note on C4 with an accent (^), and a quarter note on C4. The second measure has a quarter note on C4, followed by a dotted quarter note on C4 with an accent (^), and a quarter note on C4. The exercise is marked with a double bar line and repeat dots.

15

Musical notation for exercise 15: A 4/4 staff with a treble clef. It contains two measures. The first measure has a quarter note on C4, followed by a dotted quarter note on C4 with an accent (^), and a quarter note on C4. The second measure has a quarter note on C4, followed by a dotted quarter note on C4 with an accent (^), and a quarter note on C4. The exercise is marked with a double bar line and repeat dots.

17

Musical notation for exercise 17: A 4/4 staff with a treble clef. It contains two measures. The first measure has a quarter note on C4, followed by a dotted quarter note on C4 with an accent (^), and a quarter note on C4. The second measure has a quarter note on C4, followed by a dotted quarter note on C4 with an accent (^), and a quarter note on C4. The exercise is marked with a double bar line and repeat dots.

Rhythmen - A-B-5-

Christoph Nießen

1 2

3 4

5 6

7 8

9 10

11 12

13 14

15 16

17 18

Rhythmen -A-B-6-

Christoph Nießen

1

3

5

7

9

11

Rhythmen -A-B-7-

Christoph Nießen

